

# LONG TITLE

YOUR NAME HERE

ABSTRACT. Abstract goes here.

## 1. NAME OF SECTION 1 HERE

To install L<sup>A</sup>T<sub>E</sub>X visit one of the following web pages and follow the instructions:

- (1) Windows: <https://miktex.org> or <https://www.tug.org/texlive>.
- (2) Mac: <http://www.tug.org/mactex>
- (3) Linux: <https://www.tug.org/texlive>.

For information on how to use L<sup>A</sup>T<sub>E</sub>X, see <http://www.tug.org>. Any mathematical symbols or math should always go between two dollar signs such as  $f(x) = x$  or should be displayed such as

$$f(x) = x.$$

You can also use the align environment such as

$$\begin{aligned} f(x) &= x \\ &= 1 + x - 1 \\ &= (x^3)^{\frac{1}{3}} \\ &= \sqrt[3]{x^3}. \end{aligned}$$

Other useful commands:  $\frac{a}{b}$ ,  $\int_a^b f(x) dx$ ,  $\{a_n\}_{n=1}^{\infty}$ ,  $\mathbb{R}$ ,  $\mathbb{Z}$ ,  $\mathbb{N}$ ,  $\mathbb{Q}$ ,  $\backslash$ ,  $\alpha$ ,  $\beta$ ,  $\dots$   
How to input a picture:

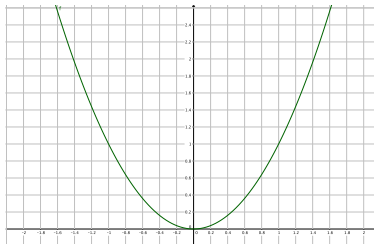


FIGURE 1. The graph of  $x^2$

**Definition 1.1.** This is a definition of **definition**.

**Proposition 1.2.** *This is a proposition.*

**Lemma 1.3.** *This is a lemma.*

